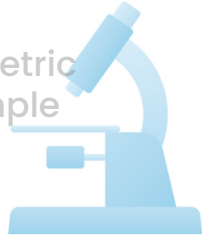




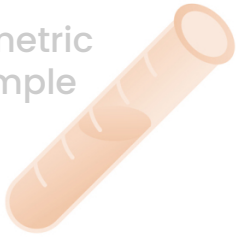
London Psychometric
Laboratory Sample



London Psychometric
Laboratory Sample



Psychometric
Laboratory Sample



London Psychometric
Laboratory Sample



London Psycho
Laboratory Sa



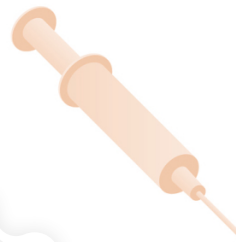
3RS Report

S SS

London Psychometric
Laboratory Sample



London Psychometric
Laboratory Sample



Psychometric
Laboratory Sample



London Psychometric
Laboratory Sample



London Psycho
Laboratory Sa





Rapid Reasoning Response Test

London Psychometric
Laboratory Sample

London Psychometric
Laboratory Sample

The Rapid Reasoning Response (3RsTest), developed by the London Psychometric Laboratory, is a brief 5-minute assessment, including instructions and example trials, designed to measure general reasoning ability. Reasoning ability, a principal component of IQ, differs from it as it does not encompass vocabulary, cultural literacy, and other complex abilities.

Petrides (2020) argues that the significance of IQ is often overstated in assessment settings to the detriment of broader real-life intelligence facets. However, IQ remains a key functional dimension warranting evaluation in comprehensive assessments. The 3RsTest from the London Psychometric Laboratory provides a sensitive, reliable, and valid measure of this core component of IQ, employing highly efficient scientific methodologies.

Thank you for choosing an LPL Ltd. product. We trust you will find this information helpful and wish you the best in your future endeavors.

Sincerely,

Kontsantinos V. Petrides

London Psychometric
Laboratory Sample

London Psychometric
Laboratory Sample

Psychometric
Laboratory Sample

London Psychometric
Laboratory Sample

London Psycho
Laboratory Sa



Scope of Assessment

This test does not evaluate IQ. Traditional IQ assessments measure a much broader range of skills and require proctoring under standardized conditions, typically lasting 45-90 minutes. Given their limited capacity to reflect the full spectrum of an individual's talents, skills, and experiences, we question the practical value of the full-scale IQ index and generally do not recommend its use in most scenarios.

Accuracy and Error Margin

Due to the streamlined nature of the 3RsTest, there is a total error margin of approximately 10 points for a 95% confidence interval. This means that if you were to take this test 100 times under similar conditions, we expect that your score would fall between 63 (-5 points) and 73 (+5 points) in 95 out of those 100 times.

Primary Purpose

The 3RsTest is designed primarily to screen for learning difficulties or neurological conditions that may necessitate special accommodations in the workplace. It is not intended to definitively measure intellectual capacity, much less to evaluate capacity for job performance.

Influencing Factors

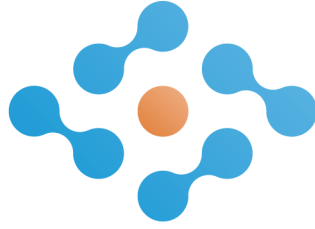
Numerous factors could have influenced your performance on the test, including mood, any prescription medications, test environment, administration conditions, and previous testing experience. If you are considering retaking the test, we recommend a minimum two-week interval between administrations.

Reference

Petrides, K. V. (2020). Radix Intelligence: A new definition and integrative model of intelligence. *Personality and Individual Differences*, 169, Doi.org/10.1016/j. paid.2019.109784



London Psychometric
Laboratory Sample



London Psychometric
Laboratory Sample

Psychometric Laboratory



Psychometric
Laboratory Sample

London Psychometric
Laboratory Sample

London Psycho
Laboratory Sa

Reflection of your essence



London Psychometric
Laboratory Sample



Understand the
fundamental forces
guiding your
decisions.



Contrast your
present to your
expectations.

London Psychometric
Laboratory Sample



Commit to a path
through deliberate,
mindful action.



Psychometric
Laboratory Sample

London Psychometric
Laboratory Sample

London Psycho
Laboratory Sa